

Unofficial Translation



PUBLIC EXPOSE

PT GOLDEN ENERGY MINES TBK



5 December 2013

Narwastu Room, Sinar Mas Land Plaza Tower III, Basement 1



- Company Overview**
- Financial 9 Months Overview**
- Significant Achievements**
- Corporate Social Responsibility (CSR)**
- Question & Answer**

COMPANY OVERVIEW



COMPANY SHAREHOLDERS



PT Dian Swastatika Sentosa Tbk

66.9998%

GMR Coal Resources Pte Ltd

30.0000%

Publik

3.0000%

PT Sinar Mas Cakrawala

0.0002%

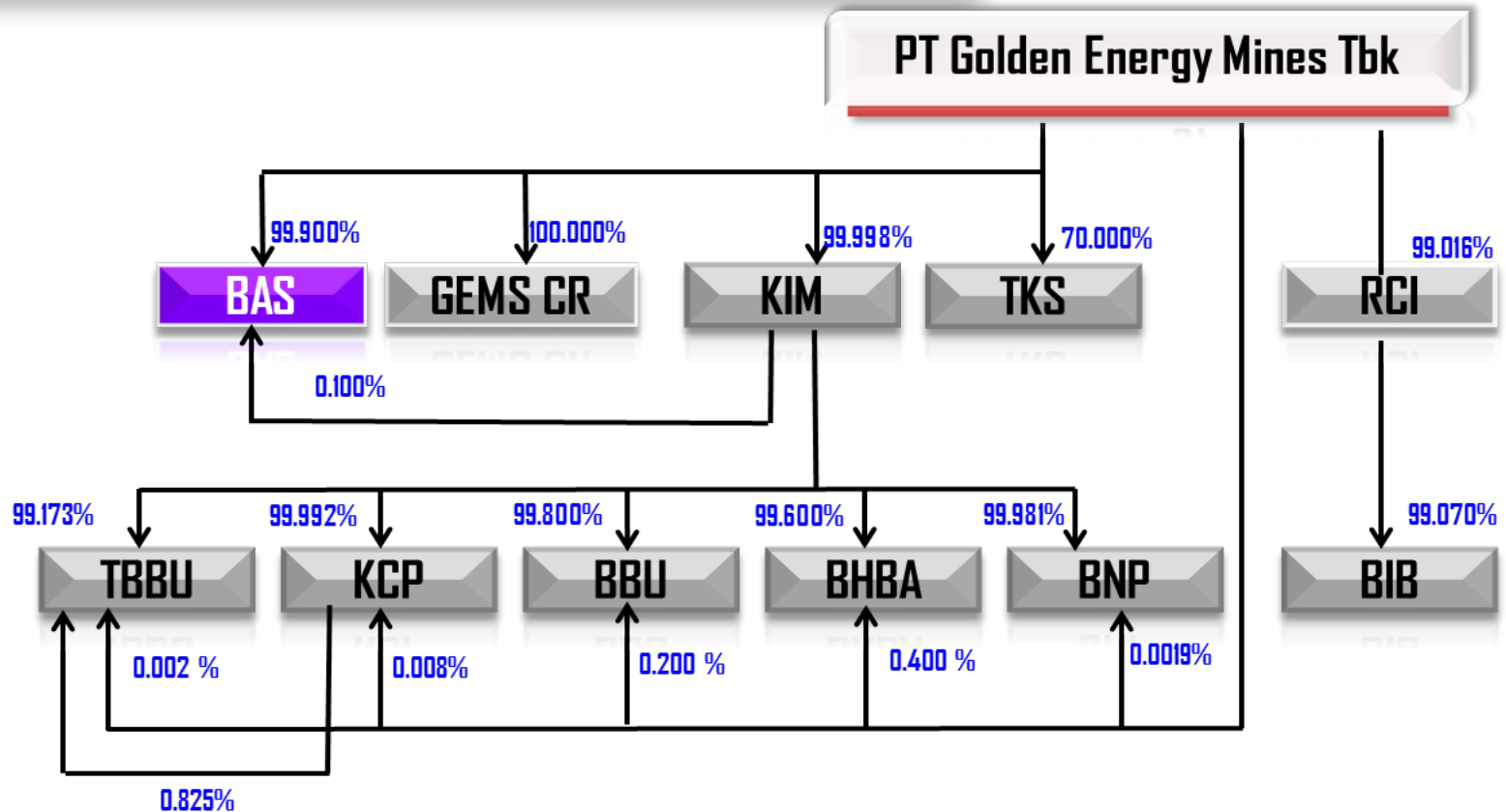


PT Golden Energy Mines Tbk (GEMS) first listed in Bursa Efek Indonesia (IDX) at 17 November 2011

Number of Shares : 5,882,353,000 shares

Market Capitalization per 30 September 2013 : Rp. 12,941,176,600,000,- (US\$ 1,114,369,809)

***) Rp 2,200/share; Rp 11,613/US\$ (Middle Rate of Bank Indonesia)**



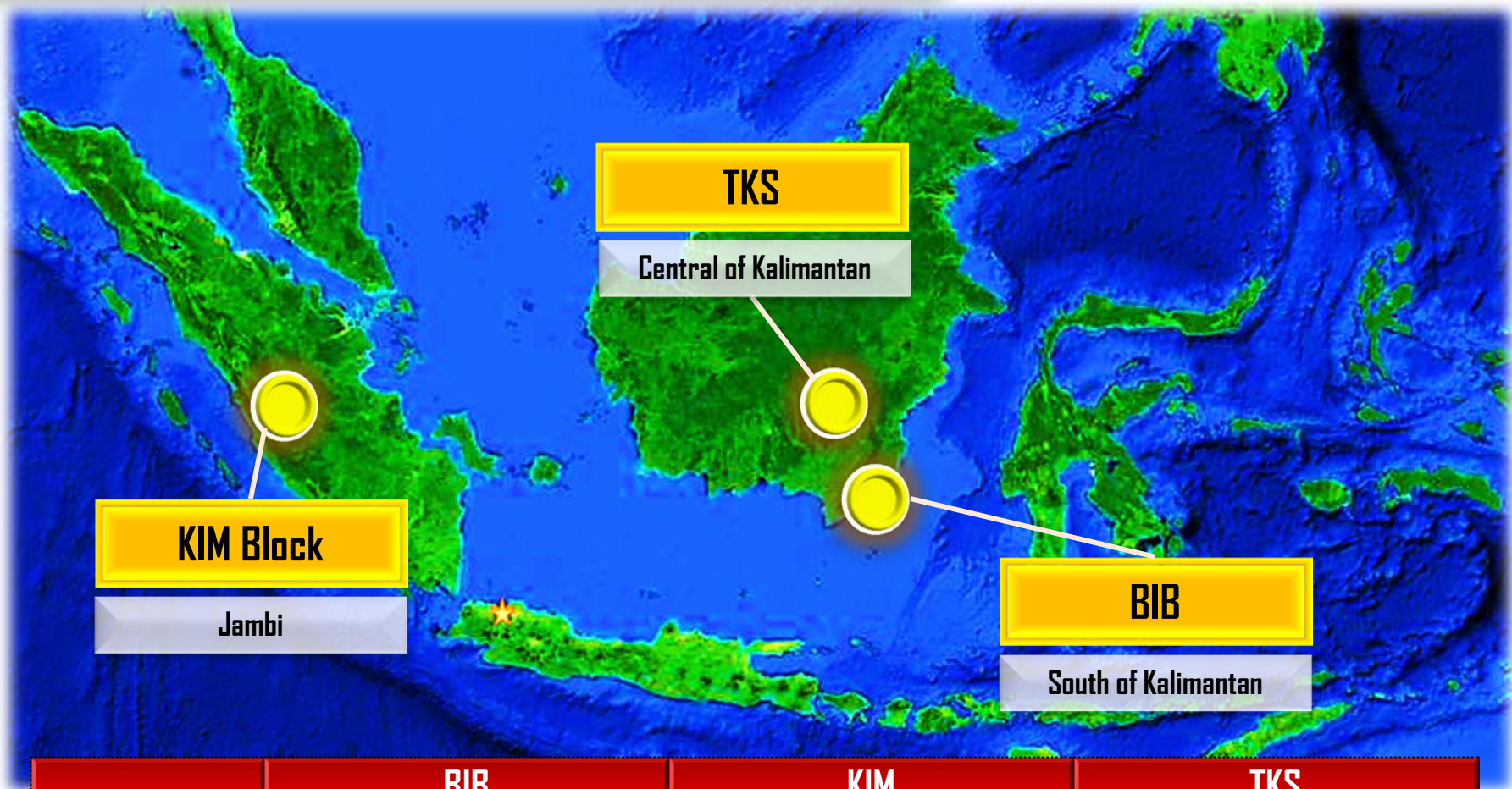
Subsidiaries majority owned by GEMS:

RCI: PT Roundhill Capital Indonesia
 BIB: PT Borneo Indobara
 TKS: PT Trisula Kencana Sakti
 KIM: PT Kuansing Inti Makmur
 GEMS CR: GEMS Coal Resources Pte. Ltd
 BAS : PT Bumi Anugerah Semesta, established on August 19th, 2013

TBBU: PT Tanjung Belit Bara Utama
 KCP: PT Karya Cemerlang Persada
 BBU: PT Bungo Bara Utama
 BHBA: PT Bara Harmonis Batang Asam
 BNP: PT Berkas Nusantara Permai



MINE LOCATION

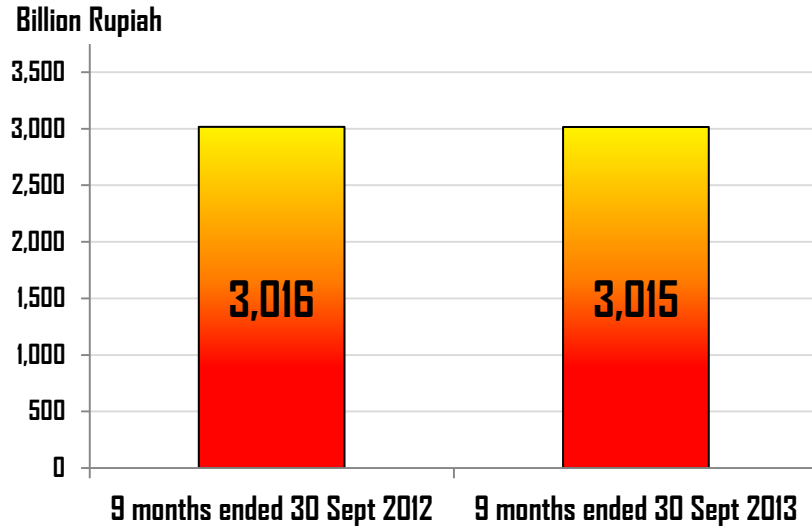


	BIB	KIM	TKS
License	PKP2B Gen. 2 : 2006 - 2036	IUP 2009 - 2029	2009 - 2028
Area	24,100 ha	2,610 ha	11,455 ha
Location	Tanah Bumbu Regency, South of Kalimantan	Bungo Regency, Jambi	Barito Utara and Barito Timur Regency, Central of Kalimantan

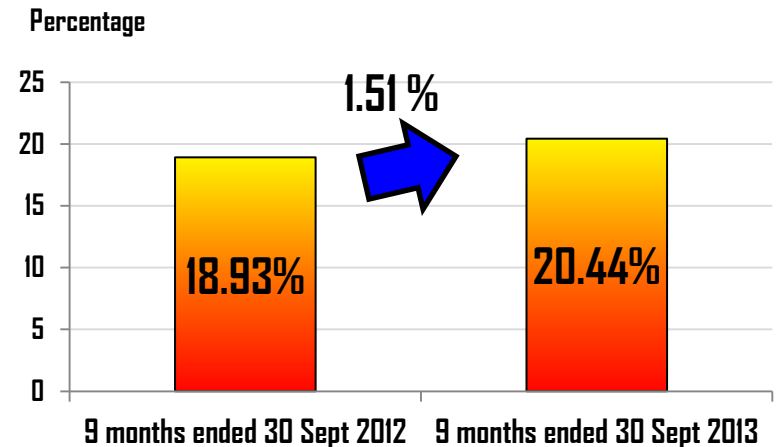
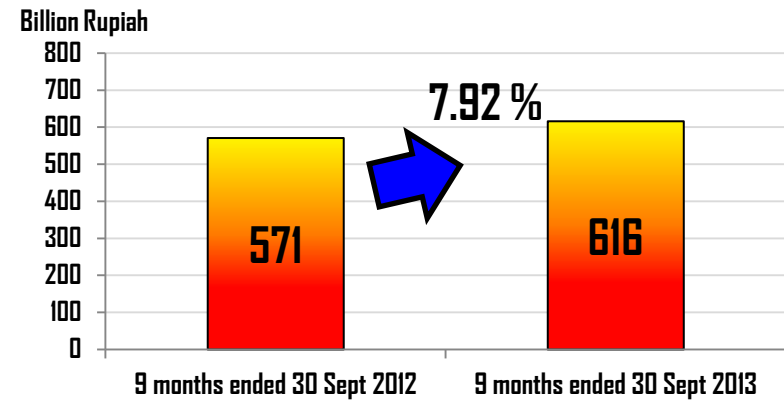
FINANCIAL 9 MONTHS OVERVIEW



NET SALES

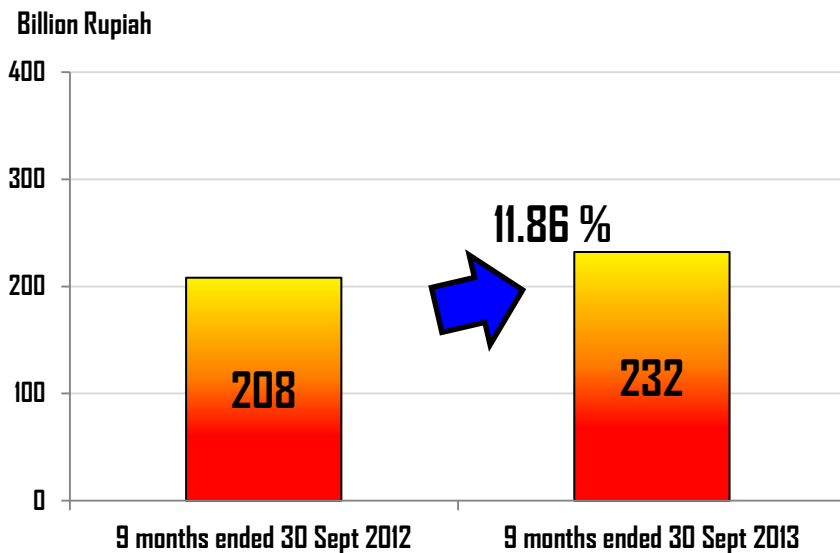


GROSS PROFIT

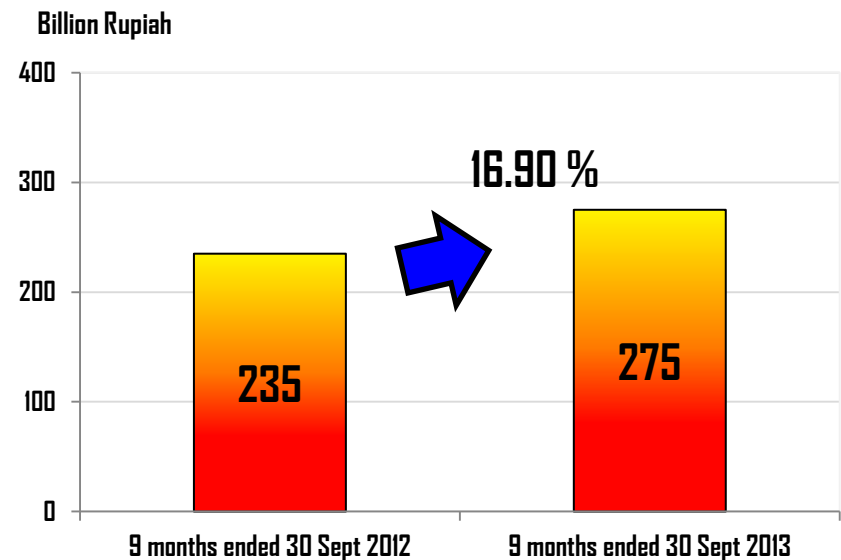




PROFIT BEFORE TAX

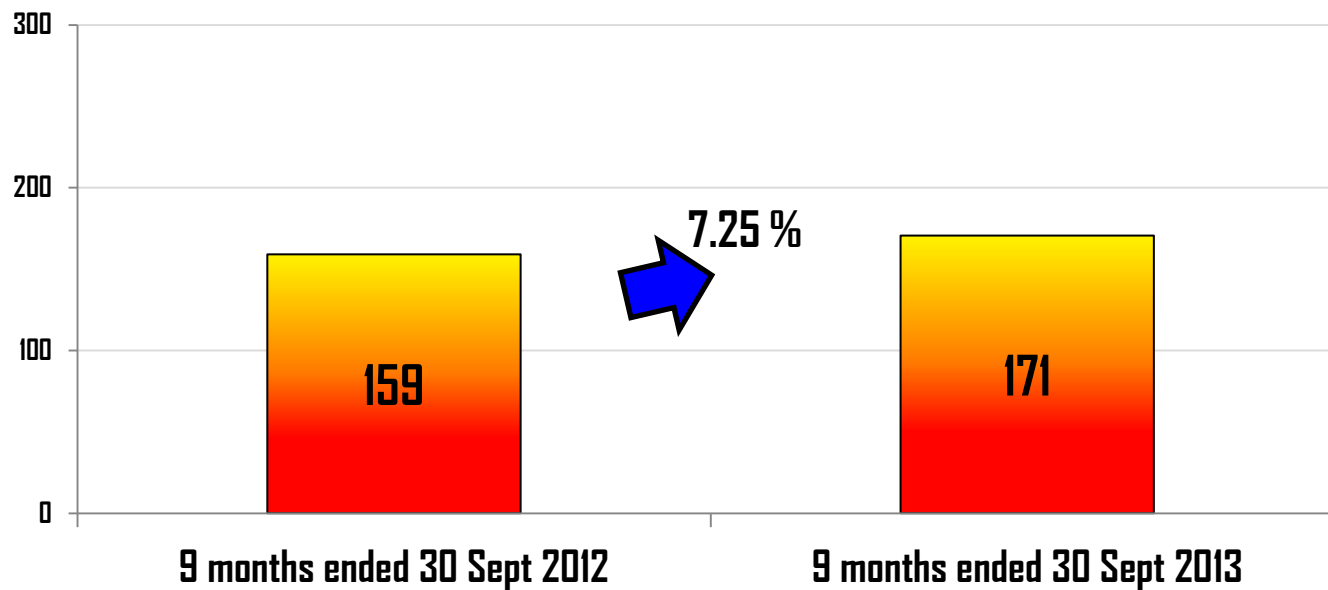


EBITDA



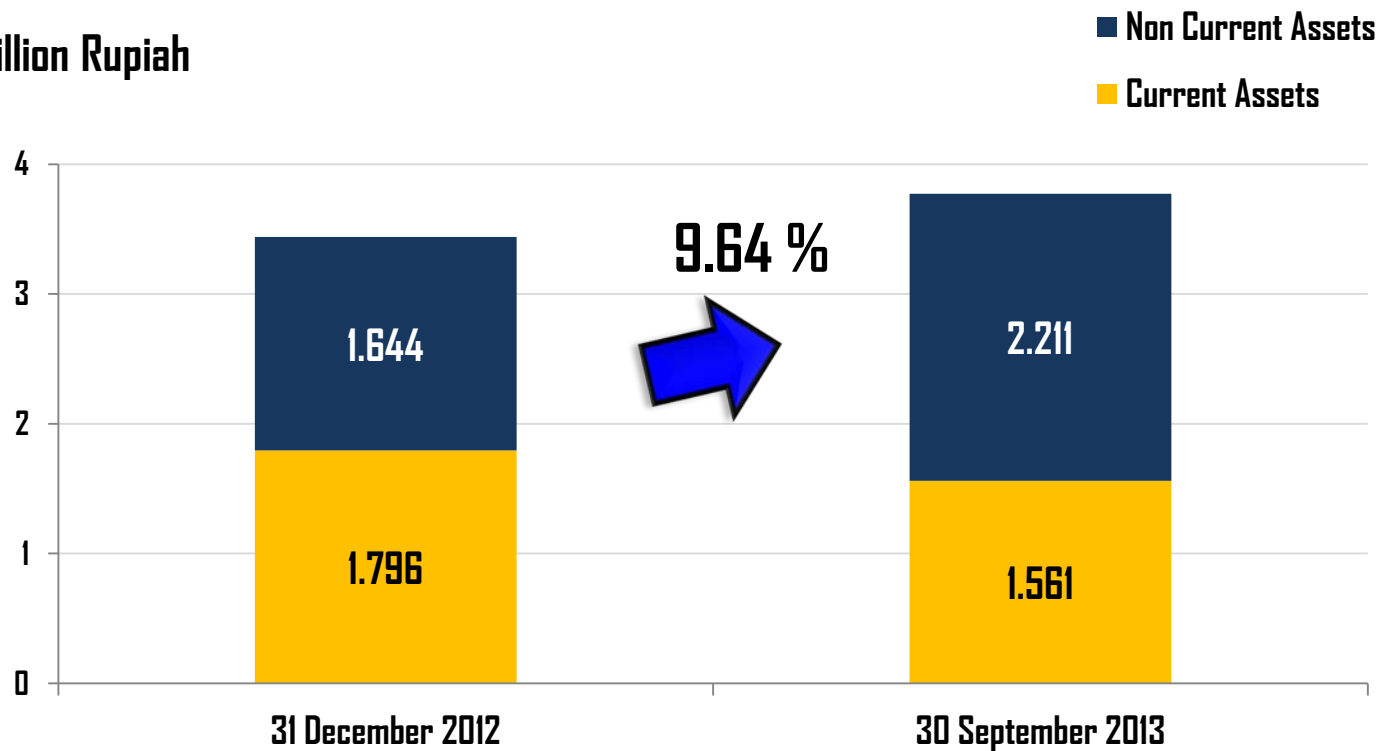
NET PROFIT

Billion Rupiah

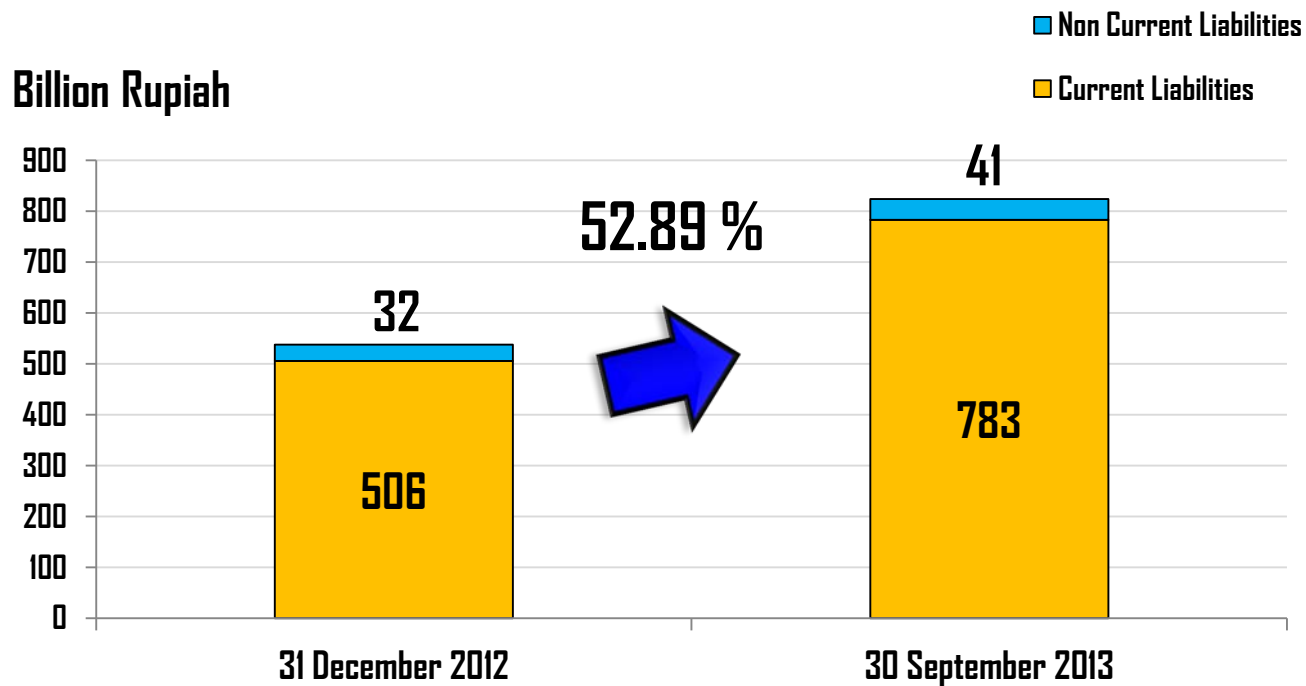


ASSETS

Trillion Rupiah

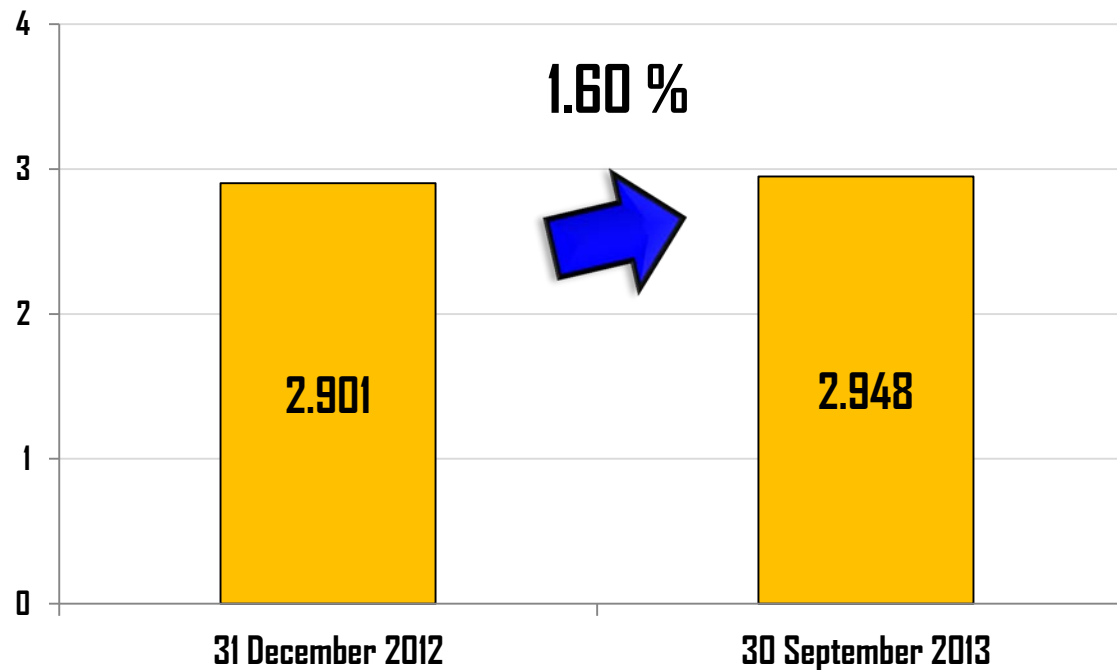


LIABILITIES



EQUITY

Trillion Rupiah





Description	30-Sep-12	30-Sep-13
Debts/Equity Ratio (times)	*	0.01
Debts/Assets Ratio (times)	*	0.01
Return On Equity (%)	5%	6%
Debts/EBITDA (times)	*	0.13
EBITDA/Interest (times)	4,316.01	8,488.72

*) The Company does not has any debts as of 30 Sept 2012

SIGNIFICANT ACHIEVEMENTS



Thursday, 5 December 2013

Narwastu Room, Sinar Mas Land Plaza Tower III ,Basement I

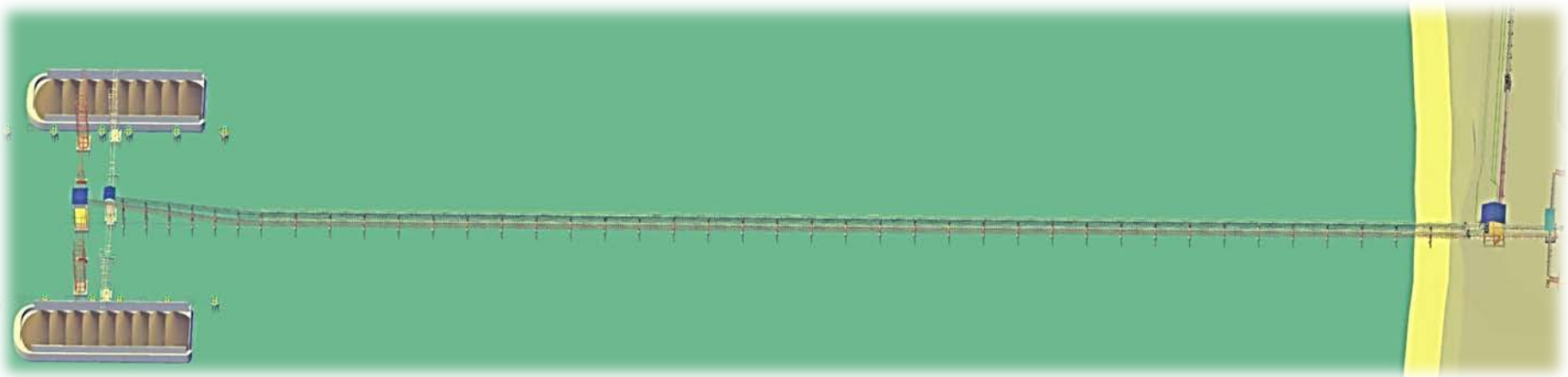
The Company through its subsidiary PT Borneo Indobara (BIB) conducts conveyor infrastructure Construction located in Bunati Village, Angsana District, Tanah Bumbu Regency, South of Kalimantan.



Bunati Project

Newline Conveyor CAP 2000 TPH Construction

Telescopic Chute C/W Travelling Construction



- **Target completion in 2013.**
- **Capacity Expansion from 4 million to 12 million Mt.**



Erection structure transfer tower

Telescopic Chute Project

Progress*

Objectives

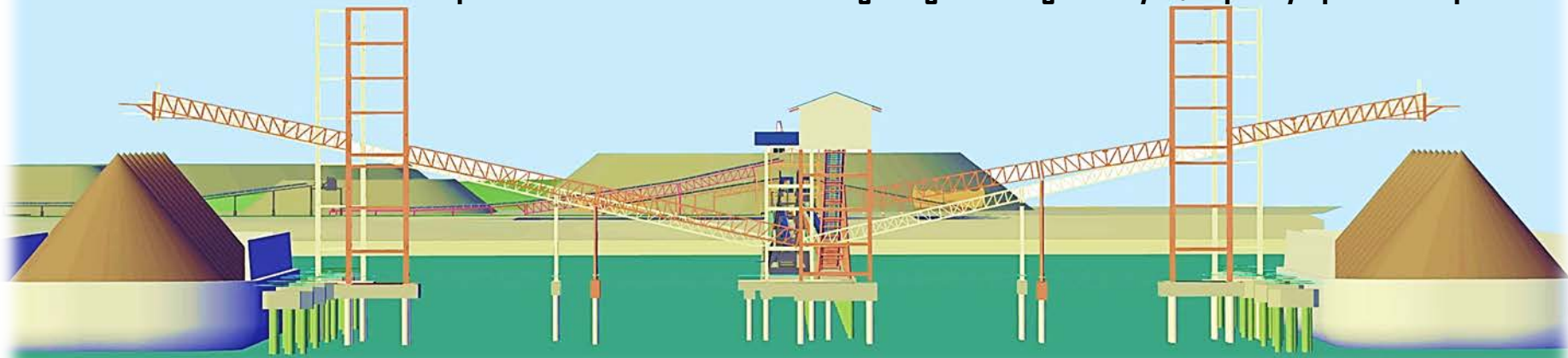
100%

- Reduce environmental pollution of dust barge loading conveyor
- Avoiding loss wind-blown coal
- Meet the EIA (AMDAL) requirement

*)per 25 October 2013



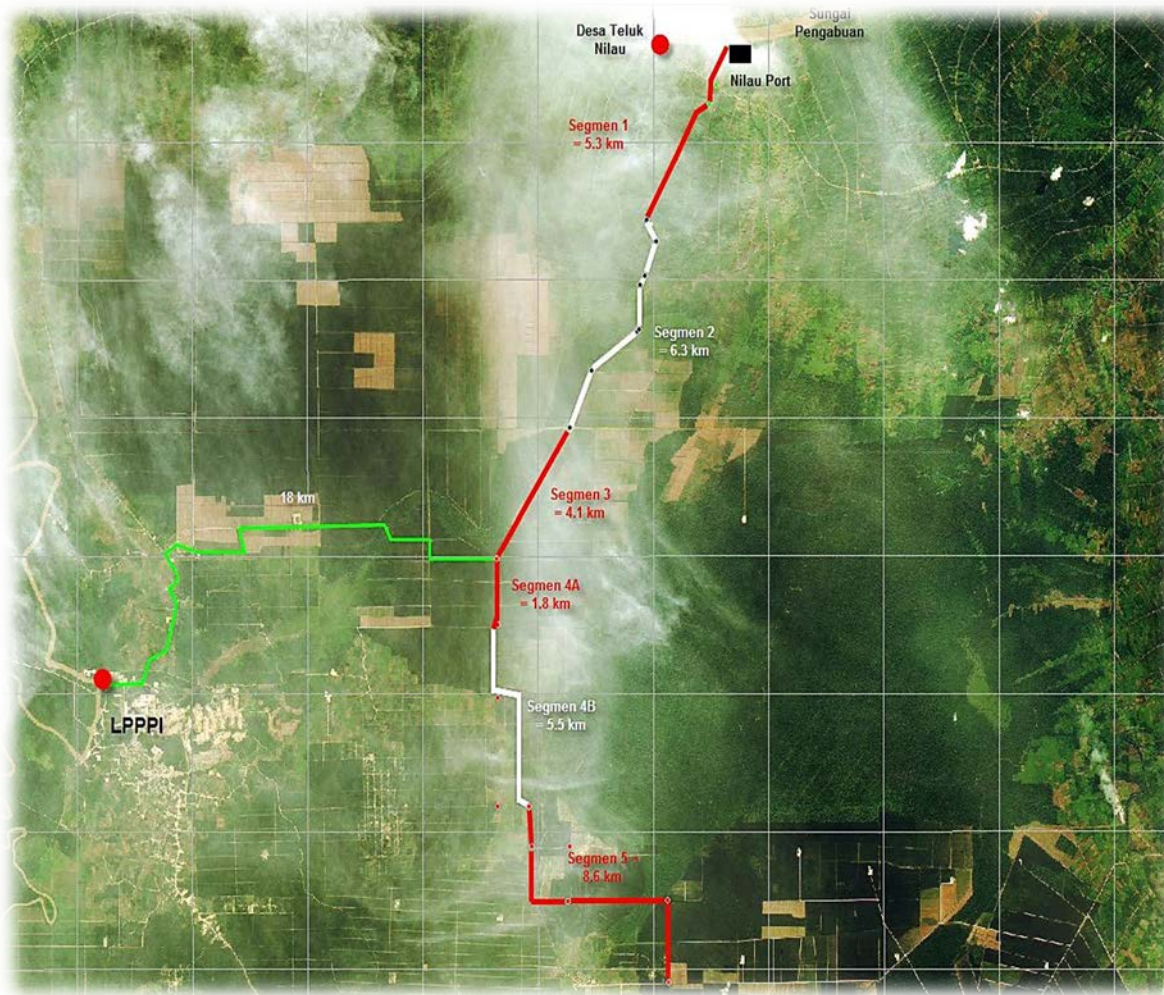
- Telescopic chute to install on the Existing Barge Loading Conveyor, capacity up to 1000 tph



The Company through its subsidiary, PT Tanjung Belit Bara Utama (TBBU) conducts the infrastructure construction in Teluk Nilau Village, Pengabuan District, Tanjung Jabung Barat Regency, Jambi (Nilau Project).



Description	
NILAU PROJECT	New Road Construction to Nilau Port
	Nilau Port Construction



- Hauling road construction with a total distance of ± 31.9 km.
- Road Capacity up to 3 juta Mtpa.

Progress 100%

Dolphins & Barge Loading Conveyor



Coal Stockyard and Conveyor System



Progress *

99%

*) Per 25 Oktober 2013

- Port Capacity up to 2 -3 milion Mtpa.
- Start to operate on January 2014
- Shipment Target up to 50 thousand / month or 600 thousand mt / year.

The Company through its subsidiary, PT Kuansing Inti Makmur (KIM) conducts the infrastructure development in Desa Tanjung Belit, Jujuban District, Bungo Regency, Jambi.

> BACKGROUND



Growing Need for Landfill Area Outside the Pit

Limited Availability of Land

High Land Acquisition Value

Fall in Coal Sale Price



Crushing Km 44





> Objectives



The additional of disposal area with a capacity of 8 million Bcm



To reduce transportation distance by up to 800 meter



To reduce the transportation cost by up to USD 2.5 million*



Improvement of mine site layout and better work monitoring

*)at IDR 11,000/liter of diesel

> Progress

54%

Per 30 September 2013



Production Volume

■ Projection Oct - Dec 2013

■ Company Actual Production Ytd 30 Sept 2013

Million Tons

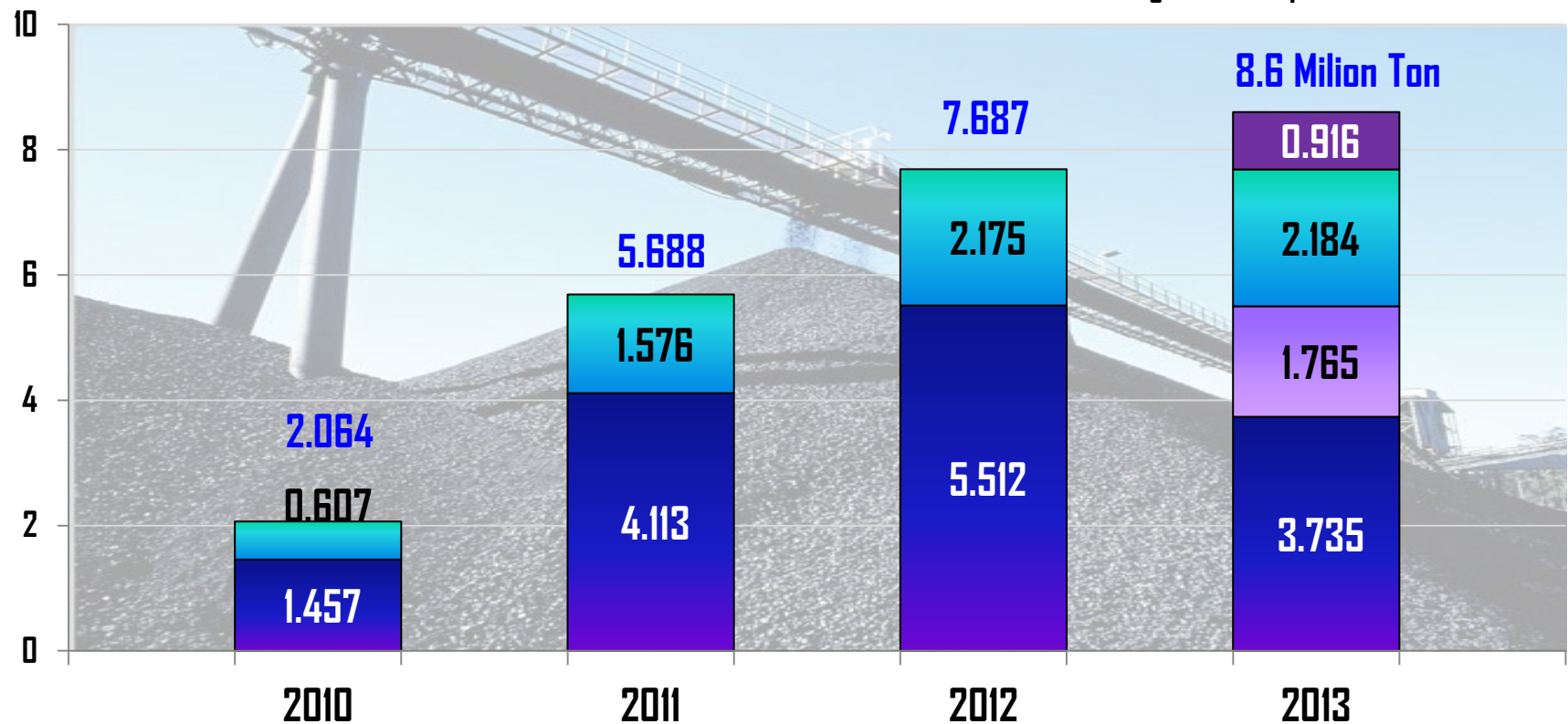




Sales Volume

Million Ton

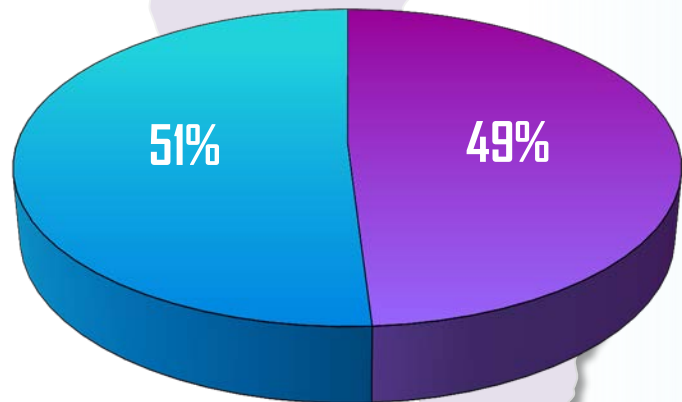
- Projection Trading Oct-Dec 2013
- Trading YTD 30 Sept 2013
- Projection Mining Oct - Dec 2013
- Mining YTD 30 Sept 2013





NET SALES

9 months ended 30 Sept 2013



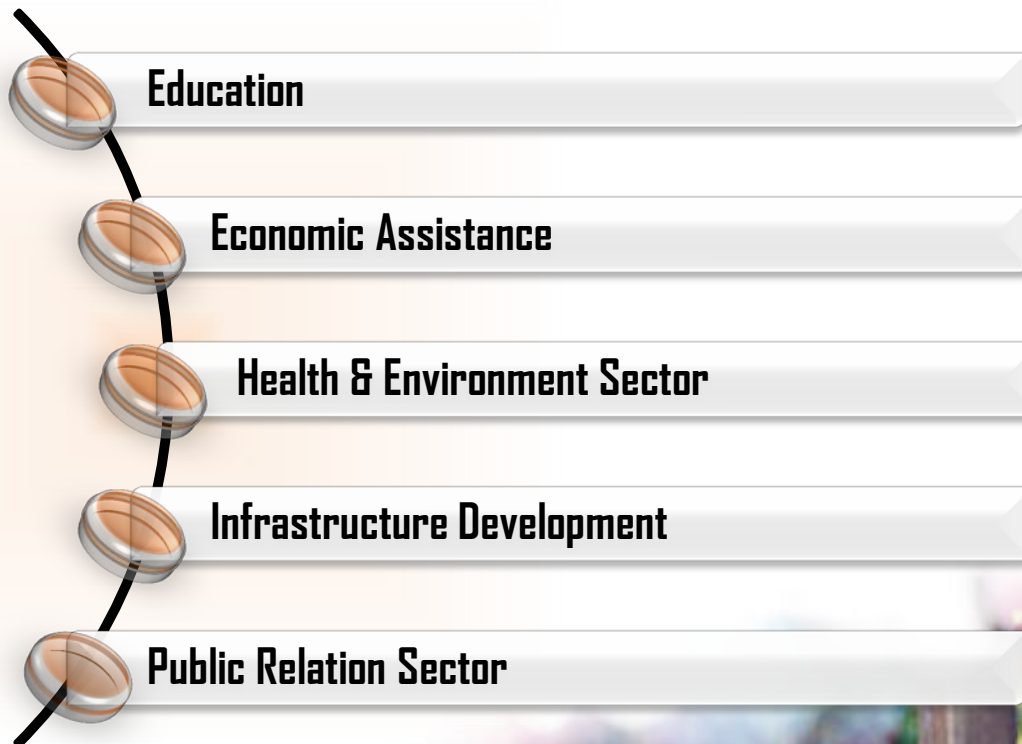
■ Domestic
■ Export



CORPORATE SOCIAL RESPONSIBILITY (CSR)



The Company is committed to develop the community around the Company through various activities which can create long term values, which classifies such activities into 5 (five) main activities through:





The Company's CSR programs through BIB in Health and Environment sector in collaboration with the Health Center Sebamban I Loban River District, Tanah Bumbu Region, South of Kalimantan. Approximately 713 residents of 5 villages get Free Examination & Treatment for Mild disease.





The Company CSR Program of developing Nurul Ihsan Mouque through KIM, at Bungo Regency, Jambi



The Company CSR Program of handing over an ambulance through KIM to Bungo Regency Government, Jambi



The Company CSR Program of Car Accident Rescue and Firefighting Flight through KIM to Bungo Regency Government, Jambi



QUESTION & ANSWER





THANK YOU